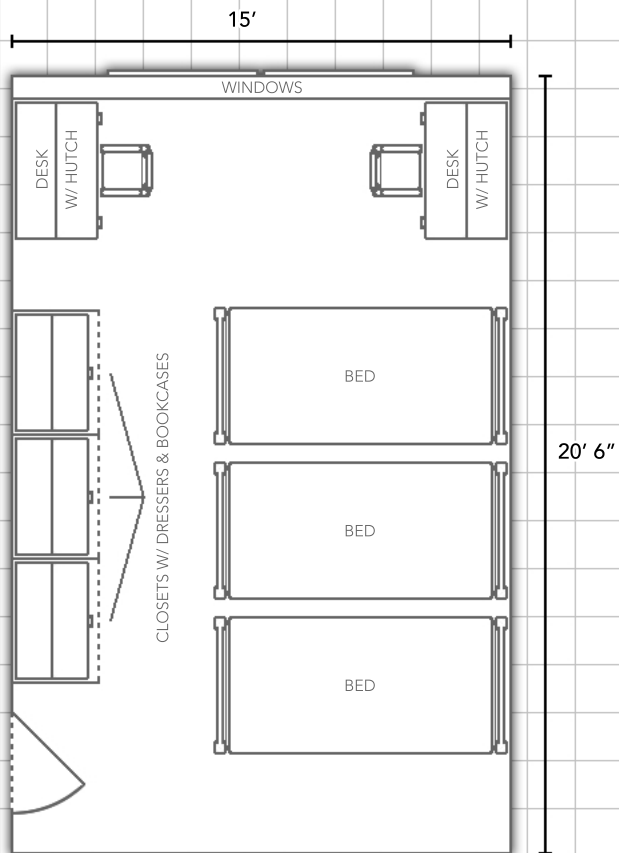


FORD, MCKINNEY, AND WELLER HALLS

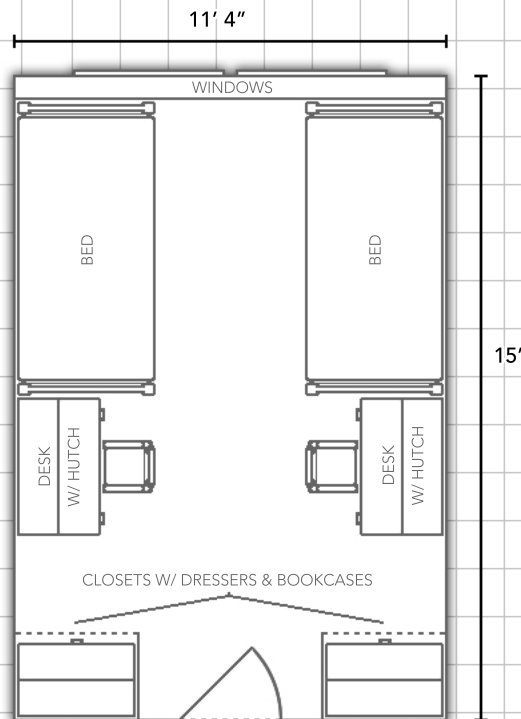


Information available at WWW.EIU.EDU/HOUSING

Deluxe Double Room:



Double Room:



Department:

**Housing and
Dining Services**



EASTERN ILLINOIS UNIVERSITY™

Bedding:

Bedding in all rooms measure
80" X 39" (x-long twin)

Furnishings:

Rooms are tiled and feature
stackable,loftable and bunkable
furniture

Miscellaneous:

Layouts are not to scale